

# Tamaūpoko Community Newsletter



Welcome to the second publication of the Tamaūpoko Community Newsletter, proudly brought to you by the TCLD Trust (TCLT) and its staff. The recent outbreak of COVID-19 has forced a lot of us to take a step back and reassess what is important to us all, and how living in our isolated and rural community impacts us in times like this. Page 2 of this newsletter is devoted just to COVID-19 and we ask for your ideas about how we can all make the most of moving into “Recovery Mode” and thinking ahead.

It has been a whirlwind past few months, and prior to all the chaos of COVID-19, our Communities were making some great traction with different projects which you will read more about on Page 3. In this newsletter you will also get some updates with what else is happening in and around Tamaūpoko. If you want to talk to us more about any of the projects we have on the go, or simply what we have been up to – feel free to drop us an email at: [isobel@tclt.co.nz](mailto:isobel@tclt.co.nz), you can visit us on our website [www.tclt.co.nz](http://www.tclt.co.nz) and when the Hub is open to the public, you can visit us at the River Valley Community Hub (behind the Recycling Centre on Maria Place). Read more about the Hub on page 4.

In the mean time, put the kettle on, pour a cup of tea, find a comfy seat and read all about Community Led Development within Tamaūpoko.

## COVID-19 UPDATE

The 'TCLT trustees' and staff congratulate the Te Ranga Tupua IWI leadership during this unprecedented time of upheaval, for the decision to establish the Te Awa Tupua Response Hub which is managed and operated by our very capable Te Oranganui Trust staff. We are grateful and salute you all for your bravery, sacrifice and commitment as essential frontline kaimahi to support and protect our people.

TCLT also endorses the decisions of the Prime Minister and her team of expert advisors to carry us through this national state of emergency with hopefully the minimum of consequential fallout.

Along with our CLDP partner of the Department of Internal Affairs, we provide for you, the below links and contacts as official up-to-date information and advice.

We will continue to be of service to our settlement communities, by adding onto the great work being carried out by our various government agencies and local organisations, especially too, as we approach our winter season likely to be compounded further because of this pandemic crisis.

To all of our Tamaūpoko whānau, please, stay home, keep safe, be kind & take care of each other within your bubble – together, we will survive this Covid-19 pandemic!

Noho haumaruru ki te kāinga. Kia ora ai, kia pai ai, te putanga ake ō tātou katoa.  
Kia kaha, kia maia, kia manawanui.

## USEFUL LINKS & CONTACTS

- |  |  |
|--|--|
| ◆ <a href="http://www.covid19.govt.nz">www.covid19.govt.nz</a>     | ◆ Covid-19 Healthline: 0800 3585453  |
| ◆ <a href="http://www.tpk.govt.nz">www.tpk.govt.nz</a>             | ◆ Te Ranga Tupua Response Hub: 0800 202004   |
| ◆ <a href="http://www.wdwb.org.nz">www.wdwb.org.nz</a>             | ◆ <a href="http://www.whanganuiandpartners.co.nz">www.whanganuiandpartners.co.nz</a> |
| ◆ <a href="http://www.teoranganui.co.nz">www.teoranganui.co.nz</a> | ◆ <a href="http://www.whanganui.govt.nz">www.whanganui.govt.nz</a>                   |

## RECOVERY MODE

As we move into “Recovery Mode”, we are forced to ask ourselves “What can we do differently or better?” If this kind of situation was to arise again, what are the things we have learned from this experience that we can work on to improve our way of life.. If you have any ideas about how TCLT can best support your community, please get in touch with us to discuss further.

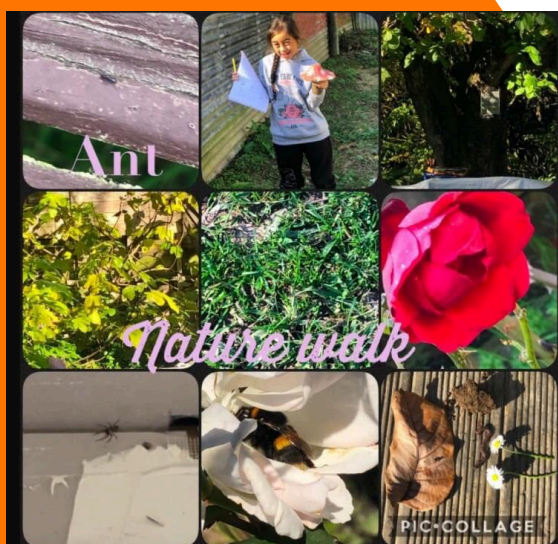
## Te Kura o Te Wainui-ā-rua

*“Te Wainui-ā-Rua School have been busy doing online learning over the lockdown period. Check out some of their awesome mahi!*

*We’re looking forward to getting back into our māra kai and hope to have a community Pātaka up and running by summer time. If you have any spare seedlings to put into our kura māra kai, that would be greatly appreciated! 😊*

*Our current and recent fundraising has been working towards the installation of a new kitchen in the old ‘manual shed’ so that we can host manuhiri better when they come to our kura, and also teach cooking with our tamariki as we currently don’t have a school kitchen”*

Tumuaki, Whaea Denny Pia Kumeroa



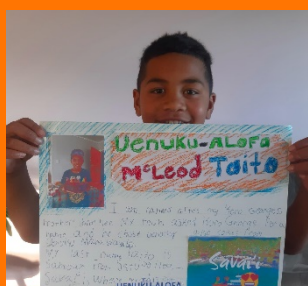
Above: Parekaiuru doing her outdoor scavenger hunt



Above: Zaraiya making a landscape diorama from things at home including a water feature!



Above: Jahlayiz learning about space, using recycled materials to create a display



Ahau : All about Me  
Uenuku (Left)



Pani (Right)

**Are you a good baker, enjoy preserving, sewing or maybe you have green fingers? If you have any skills you would be willing to share with our tamariki we would love for you to register your name with our office. This will be for later on in the year when COVID-19 restrictions have lifted.**



## Tū te Ngana Hau

*“What I love about the programme – it brings our people together throughout the whole Awa. Not everyone has to do the same training, or attend every workshop – you do it suited to your goals! We include our tamariki, rangatahi to our Kaumatua. Moving forward after COVID-19 we will continue – but safely. We will continue to connect and pursue our goals on the Awa, empowering each other and striving to be the best versions of ourselves. Ko Au te Awa, Ko te Awa Ko Au”*

Community Coordinator, Tiara Ranginui



*“Tū Te Ngana Hau ( breath of endeavor) is a programme/mobile pilot for The people of the Whanganui River. We run workshops that the people want. We cater to the people’s needs.. whether it be gardening, business knowledge, computers and Internet upskilling, Tikanga, First Aid and so much more. No cost to anyone just more knowledge for our Kete. If you have an idea please don't be shy, we can only try” – Tiara*



**TCLT proudly endorses Tū te Ngana Hau; a success not only in Tamaūpoko, but along the whole river. Nga mihi nui ki Primary ITO and Ako Foundation, the funders of this program.**

**Matahiwi:** TCLT was in a fortunate position to be able to tautoko our Rangatahi and tamariki for a fun day in town. Lots of fun to be held by all. Our Kuia held a lovely morning tea get-together at the Gallery. Many residents in Matahiwi are happy with the new speed bumps.

**Ranana:** Traffic Mirror by Mokonui Junction and by the campsite, Bin signs and new Speed bumps. We have also been working with the Council to get our main waterline mapped.

**Hiruharama / Jerusalem:** A sign was recently erected to help avoid tourists stopping. Jerusalem was also host for our Talent Quest / Movie night which was enjoyed by all. Except for the late night which we know for next time ☺

**Pipiriki:** Ruapehu District Council has worked together with our whanau in Pipiriki to establish a new and improved playground. TCLT is looking forward to seeing how we can assist with this project in the near future.

**Community-Led Emergency Management Plans:** We've been working hard on each community's Emergency Management Plans. Expect to see an updated copy on the TCLD Website soon. These plans include who is your main response team, who will assist on the ground in the event helicopters are delivering packages, where the Civil Defence radio's are and who our priority residents are if we need to evacuate.

**Community Van:** We have a community van! We are still working on our Policies and there will be a process that everyone needs to go through in order to establish if the van can be used for your community event. We will let you know when it becomes available.

**Recycling Trailer:** Just a note that we won't be recycling your junk mail / paper soon. We will be making way for aluminium cans. Keep an eye on the signs to find out when this is changed from. Great work to those of you who continue to recycle! Remember, every piece of rubbish you can recycle is one less in Papatuanuku.

**River Valley Community Hub:** this is YOUR place! If you need somewhere to have a meeting in town, or you have a business and need modern facilities to train staff, or you just want a base in town to call your own – the River Valley community hub is there. When we are open for walk ins – you are welcome any time to come and share your ideas about your community, or bounce some ideas of us that you may have for Community Led Development.

**Community Projects :** Moving forward. Have you got a project in mind that could benefit our Tamaupoko Community? If so, we want your ideas!!!! There are so many opportunities out there we need to make sure we grasp all we can while they are available to us.



# PROJECTS

